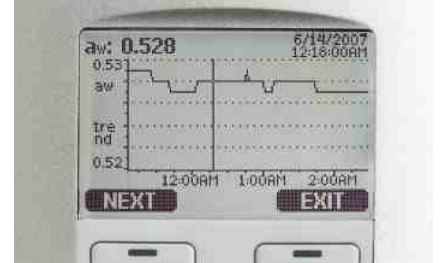


## MT330



MT330

/	
	15
HUMICAP®	
HUMICAP®	
MT330	
	(N ST)
RS232/485	
WAN/LAN	
MODBUS	(RTU/TCP)
	(MAN)
Di esel & Turbo)	

HUMICAP®

MT330

MT330

MT330

HUMICAP®

MT330

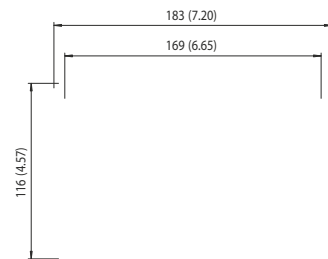
HUMICAP®

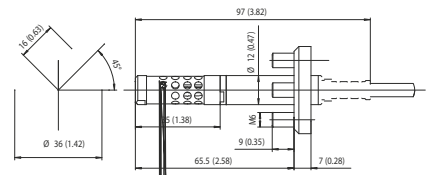
15

MT330

(aw)

(T)





$a_w$ ( ) 0 ... 1 0 ... 0.9 ± 0.02 0.9 ... 1.0 ± 0.03 +20°C (90%) 10 HLMICAP® 18Q,2		ASCI I , MODBUS RTU RS232, USB 0.5 A, 250 VAC, SPD, ( ) 10BASE-T, 100BASE-TX 8P8C (RJ45) DHCP ( ), Tel net, MODBUS TCP/IP 802.11b RP-SMA DHCP ( ), Tel net, MODBUS TCP/IP VFP 64/128, VPA	
MT332 -40 ... +180°C (-40 ... +356 °F) MT337 -40 ... +180°C (-40 ... +356 °F) MT338 -40 ... +180°C (-40 ... +356 °F) +20°C(+68 °F) ± 0.2°C (0.36 °F)		IPV4 WAN ( ) IPV4 / / / VFP VPA / TKIP VPA / CCMP ( VPA2)	
-40 ... +60°C (-40 ... +140 °F) 0 ... +60°C (+32 ... +140 °F)		/ / 10 ( ) 4 5 1370 5	
EN61326-1, IEC61000-4-5 40 ohm		EMC LCD	
10 ... 35 VDC, 24 VAC 100 ... 240 VAC 50/60 Hz 20°C (U n 24VDC)		M2x1.5 8 ... 11mm 0.31 ... 0.43" 1/2" NPT M2 8 1 5 16 4	
RS-232 25 mA U <sub>out</sub> 2 x 0 ... 1V / 0 ... 5V / 0 ... 10V 25 mA I <sub>out</sub> 2 x 0 ... 20 mA 60 mA + 20 mA (2 , 3 ) 0 ... 20 mA 4 ... 20 mA 0 ... 1 V, 0 ... 5 V, 0 ... 10 V		USB-RJ45 ( M70 ) 219685 5.5 mm 2 , 5 10 G-Al Si 10 Mg (DIN 1725) IP 66 IP65 (NEMA4X) 1.0 - 3.0 kgs /	
20°C ± 0.05% ± 0.005%/°C R <sub>L</sub> < 500 ohm R <sub>L</sub> > 2 kohm R <sub>L</sub> > 10 kohm 0 ... 1V 0 ... 5V 0 ... 10V 0.5 mm <sup>2</sup> (AWG 20) RS232, RS485 ( )		(>1 m/s)	



详情请访问: [www.system-instruments.com](http://www.system-instruments.com)  
电话: 0756-2127068  
授权代理商: 珠海赛思特仪表设备有限公司



Ref. B210953ZH-C ©Vaisala 2014  
Vai sal a / Vai sal a  
Vai sal a

